



COG-132

IBM Cognos 8 BI Metadata Model Developer

Exam number/code: COG-132

Exam name: IBM Cognos 8 BI Metadata Model Developer

Questions & Answers: 53 Q&A

Related Certifications: [Cognos](#)



Hundreds of people each day pass their IT certification exams with Testking guaranteed certification resources and training kits.

Use the [IBM COG-132](#) questions and answers to practice for your next IBM certification exam. If you don't pass – you don't pay! Testking has the first and only 100% product satisfaction and exam passing guarantee. Advanced practice questions and answers help drive the information into your routine thinking and surpass COG-132 brain dumps in retention and skill building.

[IBM](#) COG-132 exam answers and practice questions can be used at home or office, installable on up to two PCs, or print the questions and answers to take with you and train on-the-go! IBM COG-132 preparation tools are the perfect fit for any IBM certification candidate with [COG-132](#) training materials for every level of entry.

Exam Engine Features

Control your IT training process by customizing your practice certification questions and answers. The fastest and best way to train.

- * Truly interactive practice tests
- * Create and take notes on any question
- * Retake tests until you're satisfied
- * YOU select the areas of the exam to cover
- * Filter questions for a new practice test experience each time
- * Re-visit difficult questions

Exam: COG-132 Certification Questions & Answers

Question 1:

The Cognos 8 report below contains two conformed dimensions, Time Dimension and Product Dimension, and one non-conformed dimension, Order Method. Which of the following best describes the results?

MONTH	PRODUCT_NAME	ORDER_METHOD	QUANTITY	EXPECTED_VOLLME
April 2004	Aloe Relief	Telephone	286	1,690
April 2004	Aloe Relief	Web	854	1,690
April 2004	Aloe Relief	E-mail	270	1,690
April 2004	Bear Edge	Telephone	224	529
April 2004	Bear Edge	Web	60	529

- A. Cross join
- B. Multi-fact split
- C. Correlated list
- D. Contiguous result set

Answer: C

Question 2:

When running an interactive HTML report, which of the following aggregation methods is used by default?

- A. Unspecified
- B. Running
- C. Unknown
- D. Extended

Answer: B

Question 3:

Which of the following is true regarding the operational data structure illustrated below?



- A. It illustrates a parallel relationship.
- B. It should be consolidated into one table.
- C. It should be examined for a connection trap.
- D. The cardinality between the tables should be reversed.

Answer: C

Question 4:

In Framework Manager, which of the following will have a positive impact on query performance without intervention from an author?

- A. Create stand-alone filters.
- B. Add performance indicators to functions.
- C. Configure data sources in a project pointing to the same database instance to use the same connection.
- D. For a query item having an integer data type, set the Display Item Reference property to display an integer value.

Answer: C

Question 5:

In Framework Manager, which of the following is a correct technique for model segmentation?

- A. Segment a project at the level of an individual query subject.
- B. Define the repository type and path to the repository in Cognos Connection.
- C. Consolidate segmented and linked metadata in a project into a single project by publishing a package to a network location.
- D. Copy all segmented model files into one common folder before using Framework Manager's model merge feature.

Answer: C

Question 6:

If authors want to perform OLAP-style queries directly against a relational database, which Framework Manager modeling technique will a modeler use?

- A. Create regular and measure dimensions and set scope.
- B. Create shortcuts to regular dimensions and fact query subjects.
- C. Create star schema groupings for dimension and fact query subjects.
- D. Create relationships between regular dimensions and measure dimensions.

Answer: A

Question 7:

The generated Cognos SQL below contains which one of the following joins? Select
Return_Reason_Dimension.REASON_DESCRIPTION_EN as
REASON_DESCRIPTION_EN,
Returned_Items_Fact.RETURN_QUANTITY as
RETURN_QUANTITY from
go_data_warehouse.GOSLDW.dbo.RETURN_REASON_DIMENSION
Return_Reason_Dimension join
go_data_warehouse.GOSLDW.dbo.RETURNED_ITEMS_FACT
Returned_Items_Fact on (Return_Reason_Dimension.RETURN_REASON_KEY =
Returned_Items_Fact.RETURN_REASON_KEY)

- A. Inner join on RETURN_REASON_KEY.
- B. Outer join on RETURN_REASON_KEY.
- C. Left inner join on RETURN_REASON_KEY.

D. Left outer join on RETURN_REASON_KEY.

Answer: A

Question 8:

Which of the following join types does the generated SQL below illustrate? Select Manager.Manager as Manager, Product.Product as Product from datasource_name.database_name.schema.Manager Manager datasource_name.database_name.schema.Product Product

- A. Inner join
- B. Union join
- C. Outer join
- D. Cross join

Answer: D

Question 9:

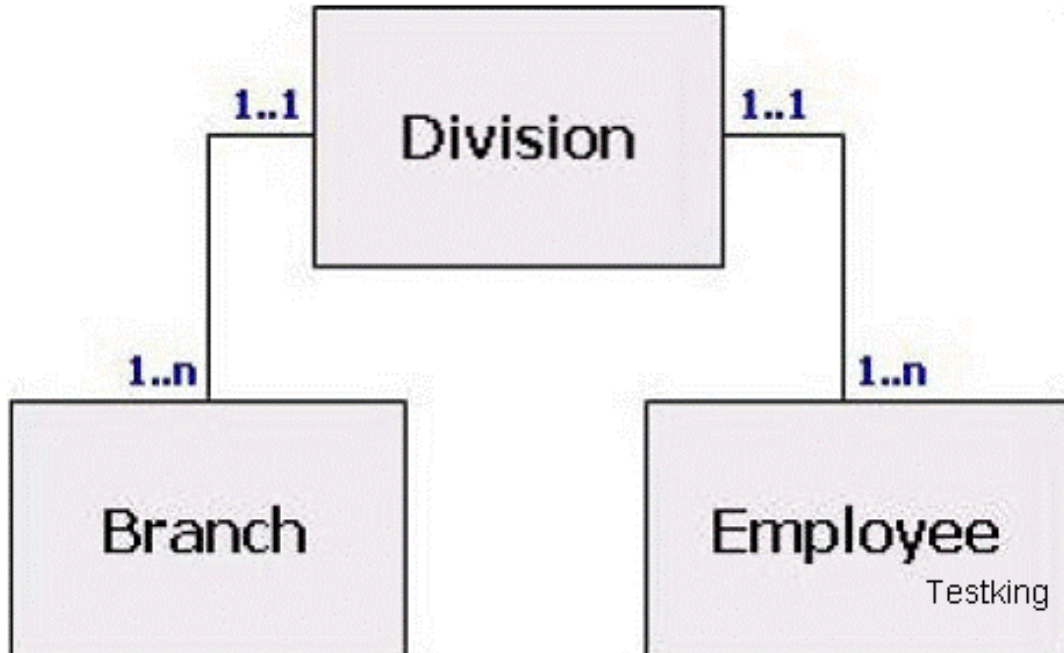
An author creates a Report Studio report that contains Month, Product Line and Revenue. Revenue has a footer to show the overall total. What will the author see in the generated Cognos SQL for the Revenue footer column?

- A. XSUM(Sales_Fact.Revenue for Time_Dimension.Month1,Product_Dimension.Product_Line) as Revenue
- B. XSUM(Sales_Fact.Revenue for Time_Dimension.Month1,Product_Dimension.Product_Line) as Revenue2
- C. XSUM(XSUM(Sales_Fact.Revenue for Time_Dimension.Month1,Product_Dimension.Product_Line) in Time_Dimension.Month1,Product_Dimension.Product_Line) as Revenue
- D. XSUM(XSUM(Sales_Fact.Revenue for Time_Dimension.Month1,Product_Dimension.Product_Line) at Time_Dimension.Month1,Product_Dimension.Product_Line) as Revenue1

Answer: D

Question 10:

What question should a data modeler answer before accepting this proposed operational data structure?



- A. Should all three tables be consolidated into one?
- B. Should the cardinalities between the tables be reversed?
- C. Are Branch and Employee dimension tables or fact tables?
- D. Is there a direct relationship between Branch and Employee?

Answer: D

Question 11:

In order to create complex joins in Framework Manager, a modeler can use which of the following techniques?

- A. Open the Relationship Definition dialog, and then edit the join expression as required.
- B. Select the relationship, and then from the Actions menu, select "Merge in New Query Subject".
- C. Open the Relationship Expression dialog, and then change both cardinality settings to 0..n or 0..1.
- D. Right-click a relationship in the Object diagram or Context Explorer, and then select "Create Compound Join".

Answer: A

Question 12:

In Framework Manager, which of the following statements is correct when working with a multilingual project?

- A. The design language can be changed at any point.
- B. A project language cannot be deleted once defined in Framework Manager.
- C. A language must be added to the project before it can be published with a package.
- D. When a new language is added to a project, all locales for that language are added as well.

Answer: C

Question 13:

Which of the following is true for 0..n cardinality?

- A. The cardinality is optional and a union will be performed.
- B. The cardinality is optional and an inner join will be performed.
- C. The cardinality is optional and an outer join will be performed.
- D. The cardinality is unknown and an inner join will be performed.

Answer: C

Question 14:

Which of the following is true of the generated native SQL below? select

```
"RETURNED_ITEM"."RETURN_QUANTITY" AS  
"RETURN_QUANTITY",  
"RETURN_REASON"."REASON_DESCRIPTION_EN" AS  
"REASON_DESCRIPTION_EN"  
from  
(select "RETURNED_ITEM"."RETURN_REASON_CODE",  
"RETURNED_ITEM"."RETURN_QUANTITY" from  
"GOSL"."dbo"."RETURNED_ITEM",  
"GOSL"."dbo"."ORDER_HEADER"  
"ORDER_HEADER", "GOSL"."dbo"."ORDER_DETAILS"  
"ORDER_DETAILS"  
where  
"RETURNED_ITEM"."ORDER_DETAIL_CODE" =  
"ORDER_DETAILS"."ORDER_DETAIL_CODE" and  
"ORDER_HEADER"."ORDER_NUMBER" =  
"ORDER_DETAILS"."ORDER_NUMBER")  
"RETURNED_ITEM"  
inner join  
"GOSL"."dbo"."RETURN_REASON" "RETURN_REASON"  
on  
"RETURN_REASON"."RETURN_REASON_CODE" =  
"RETURNED_ITEM"."RETURN_REASON_CODE"
```

- A. The derived table is executed independently, using Pass-Through SQL, and then processed locally.
- B. The derived table is used to retrieve one data set, in order to fulfill the join condition of another data set.
- C. The parent select statement uses an inner join to directly match columns from physical tables in the database.
- D. The outer projection list will return more columns than listed, due to extra columns retrieved in the derived table.

Answer: B

Question 15:

What is true of a Framework Manager model of an operational database lacking a time dimension?

- A. Virtual star schema models require a time dimension for multi-fact queries.
- B. Report authors cannot create multi-fact, time-based queries.
- C. Time-based rollups for multi-fact queries may be difficult to handle.
- D. Report authors cannot create multi-fact, time-based queries unless using a union.

Answer: C

TestKing [IBM COG-132](#) Exam Questions & Answers

Related COG-132 Exams:

[COG-400](#)
[COG-210](#)
[COG-122](#)

[COG-321](#)
[COG-480](#)
[COG-180](#)

[COG-320](#)
[COG-205](#)
[COG-200](#)

[COG-135](#)
[COG-125](#)
[COG-145](#)

[COG-105](#)
[COG-310](#)
[COG-300](#)

Popular Certification Exams:

[000-356](#)
[EC0-349](#)
[005-002](#)

[LOT-982](#)
[650-575](#)
[642-481](#)

[E20-617](#)
[920-322](#)
[BCP-223](#)

[NS0-510](#)
[642-587](#)
[1z0-232](#)

[642-964](#)
[922-104](#)
[000-175](#)

Hot Certifications:

[BlackBerry
Certified
System
Administrator](#)

[Microsoft
Partner
Competency](#)

[Ubuntu](#)

[MCTS:
Microsoft Office
Projects 2007,
Managing
Projects](#)

[CUSE](#)

Popular Certification Providers:

[ATS](#)

[CIPS](#)

[Citrix](#)

[ASVAB](#)

[Huawei](#)