



70-270

Installing, Configuring, and Administering Microsoft Windows XP Professional

Exam number/code: 70-270

Exam name: Installing, Configuring, and Administering Microsoft Windows XP Professional

Questions & Answers: 98 Q&A

Related Certifications: [MCSE](#), [MCSE 2003](#), [MCSE 2003 Messaging](#), [MCSE 2003 Security](#), [MCSA](#), [MCSA 2003](#), [MCP](#)



Hundreds of people each day pass their IT certification exams with Testking guaranteed certification resources and training kits.

Use the [Microsoft 70-270](#) questions and answers to practice for your next Microsoft certification exam. If you don't pass – you don't pay! Testking has the first and only 100% product satisfaction and exam passing guarantee. Advanced practice questions and answers help drive the information into your routine thinking and surpass 70-270 brain dumps in retention and skill building.

[Microsoft](#) 70-270 exam answers and practice questions can be used at home or office, installable on up to two PCs, or print the questions and answers to take with you and train on-the-go! Microsoft 70-270 preparation tools are the perfect fit for any Microsoft certification candidate with [70-270](#) training materials for every level of entry.

Exam Engine Features

Control your IT training process by customizing your practice certification questions and answers. The fastest and best way to train.

- * Truly interactive practice tests
- * Create and take notes on any question
- * Retake tests until you're satisfied
- * YOU select the areas of the exam to cover
- * Filter questions for a new practice test experience each time
- * Re-visit difficult questions

Exam: 70-270 Certification Questions & Answers

Question 1:

You have a small network at home. Your computer connects to the Internet via a DSL connection. In addition, your computer connects to a LAN that contains four other computers that are all running Windows XP Professional or Windows 2000 Professional. The other computers in the LAN do not have Internet access. You decide to implement Internet Connection Sharing so that all of your computers can connect to the Internet via a single DSL connection. Which of the following requirements must be met in order to use ICS?

- A. You must have a VPN connection.
- B. The network clients must be configured to use WINS.
- C. The network clients must be configured to obtain an IP address automatically.
- D. The network clients must have the ICS service installed.

Answer: C

Question 2:

You work as an administrator at TestKing.com. All client computers on the network are configured to run Windows XP Professional computers.

A TestKing.com user named Kara Lang informs you that she is unable to connect to the secure intranet Web site at intranet.testking.com. She gets an error message that the digital certificate is not from a trusted source as soon as she types `http://intranet.testking.com` into the Internet Explorer address bar.

You check and discover that the intranet Web server is using a digital certificate issued by your company's Enterprise Certificate Authority. The Enterprise Certificate Authority is located on a server named `certificates.testking.com`.

Which action should you take to make sure that Kara Lang is able to access the secure intranet Web site? (Choose TWO. Each answer forms part of the solution.)

- A. You should install the certificate in the certificate store using the Certificate Import Wizard.
- B. You should open the Internet Explorer's list of certificates on the Kara Lang computer.
- C. You should enable Use TLS 1.0 option in order to configure Internet Explorer for the Kara Lang computer.
- D. You should request a new certificate from the enterprise CA.
- E. You should contact the support company to obtain a certificate and add it to the list of personal certificates.
- F. You should import a copy of the certificate into the Trusted Publishers certificates store of Kara Lang.

Answer: B,E

Explanation:

The Internet Explorer Certificate Manager permits you to install and remove trusted certificates for clients and CAs. Many CAs have their root certificates already installed in Internet Explorer. You can select any of these installed certificates as trusted CAs for client authentication, secure e-mail, or other certificate purposes, such as code signing and time stamping. If a CA does not have its root certificate in Internet Explorer, you can import it. Each CA's Web site contains instructions that describe how to obtain the root certificate. To install or remove clients and CAs from the list of trusted certificates click Internet Options on the Tools menu, and then click the Content tab. Click Certificates and then click the Trusted Publishers tab. To add other certificates to the list, click Import. The Certificate Manager Import Wizard steps you through the process of adding a certificate.

Reference:

Rick Wallace, MCSE (Exam 70-270) Microsoft XP Professional Training Kit, Microsoft Press, Redmond, 2002, Chapter 13, Lesson 4

Question 3:

You are employed as a technician at TestKing.com. All servers on the domain are configured to run Windows Server 2000 and the client computers Windows XP Professional.

A TestKing.com user named Mia Hamm is assigned a client computer named TESTKING-WS270. Mia Hamm informs you that the security log on TESTKING-WS270 is full. When you attempt to clear the security log on TESTKING-WS270 you notice that it is full of events that relate to logons, resource access, and other events that is not needed at this point in time.

How can you ensure that TESTKING-WS270 prevent logging of these security events?

- A. On TESTKING-WS270 auditing should be disabled.
- B. On TESTKING-WS270 you need to configure the CrashOnAuditFail setting.
- C. On TESTKING-WS270 Mia Hamm should be assigned as a member of the Domain Admins group.
- D. On TESTKING-WS270 auditing should be enabled on the event log.

Answer: A

Explanation:

The security log hold information of logon events and resource access etc. These events are recorded because auditing is enabled on TESTKING-WS270. To configure the computer so that the security log does not fill up with these events, we need to disable the auditing.

Reference:

Lisa Donald & James Chellis , MCSA/MCSE: Windows XP Professional Study Guide Second Edition, Sybex Inc., Alameda, 2003, p.p. 247, 252

Question 4:

You are about to install a new driver for your CD-ROM drive, but you are not 100 percent sure that you are using the correct driver. Which of the following options will allow you to most easily and quickly save your current configuration and then return your computer to the previous state if the new driver is not correct?

- A. Safe Mode
- B. Driver rollback
- C. System Restore utility
- D. System File Recovery utility

Answer: B

Question 5:

You are the network administrator of a medium-sized company. You are trying to attach a network share to a computer whose IP address is 131.200.1.16. You are not sure of the computer's NetBIOS name. Which of the following command-line utilities can you use to determine the NetBIOS name?

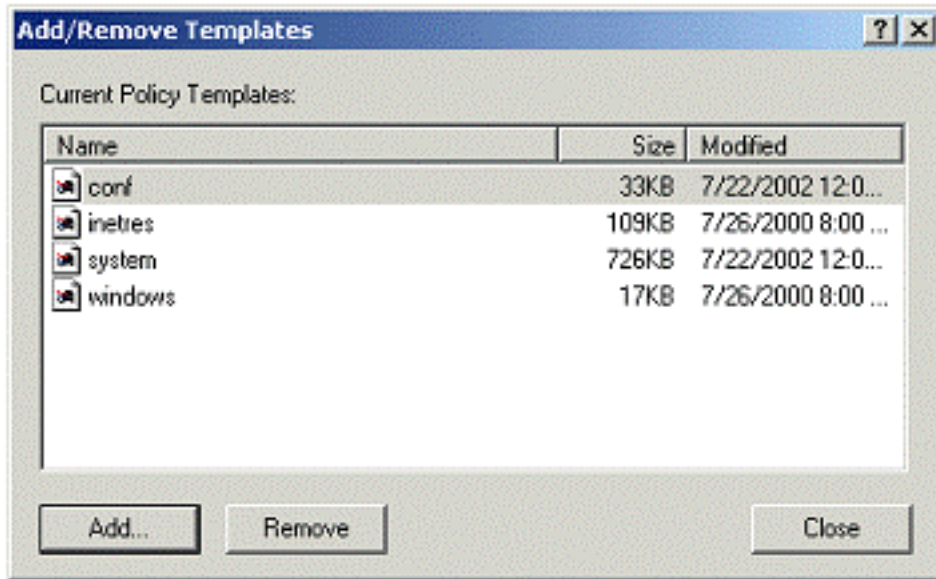
- A. IPCONFIG

- B. NBTSTAT
- C. PING
- D. GROPE

Answer: B

Question 6:

Cathy has been delegated the administration of five computers running Windows XP Professional running Service Pack 1. She wants to standardize the users' desktop settings. She decides to disable the Run command and Control Panel via a group policy. See the exhibit for templates.



Which administrative template does Cathy need to use to accomplish this? Select the best answer.

- A. Windows.adm
- B. Conf.adm
- C. System.adm
- D. Inetres.adm

Answer: C

Question 7:

You are a help desk technician for TestKing. The TestKing Active Directory-based network consists of several branch offices that are connected to headquarters through private WAN links. None of the offices is connected to the Internet. E-mail services are provided by Exchange 2000 Server. You must implement Remote Assistance. You work at headquarters, and you must be able to establish Remote Assistance sessions with all Windows XP Professional computers on the network. Which of the following actions should you perform?

- A. Configure MSN Messenger on all Windows XP Professional computers to use Exchange 2000 Server.
- B. Download the latest version of MSN Messenger from the Microsoft Web site, and deploy it on all Windows XP computers.
- C. Add the domain user accounts of the technical support personnel to the list of Remote Desktop Users on the Remote tab of System Properties in Control Panel.

TestKing [Microsoft 70-270](#) Exam Questions & Answers

D. Assign the Allow - Modify NTFS permission for the Network Service folder to the technical support personnel on all Windows XP Professional computers.

Answer: A

Question 8:

TestKing.com has employed you as an IT admin. The servers on the network are configured to run Windows Server 2000 and the client computers Windows XP Professional.

The network contains 200 client computers. You are responsible for managing a computer named TESTKING-WS270 that is configured to host an accounting application. Various users log onto TESTKING-WS270 to access the application to accomplish their daily tasks. These users make use of their local user accounts to access TESTKING-WS270. You want the passwords for the local user accounts on TESTKING-WS270 to be changed every 30 days.

How should you configure so that the domain user accounts will remain unaffected?

- A. By changing the local security policy on TESTKING-WS270 to limit the password age to 30.
- B. By changing the default domain controller policy to apply a restrictive policy.
- C. By changing the passwords never expires option on the computer that host the application.
- D. By allowing passwords to be cached.

Answer: A

Explanation:

The password policies section of the local security policy on TESTKING-WS270 applies only to local user accounts only. It will thus have no effect on the domain user accounts.

Reference:

Lisa Donald & James Chellis , MCSA/MCSE: Windows XP Professional Study Guide Second Edition, Sybex Inc., Alameda, 2003, p. 243

Question 9:

You are employed as an administrator at TestKing.com. All servers on the TestKing.com network are configured to run Windows Server 2000 and the client computer Windows XP Professional.

A TestKing.com Marketing Department user named Amy Walsh is assigned a laptop computer named TESTKING-WS270. Amy Walsh takes TESTKING-WS270 to home in preparation for out of office workdays.

Amy Walsh complains that she is forced to select either docked or undocked hardware profiles from the Hardware Profile Menu every time she turns TESTKING-WS270 on offsite. This is problematic as there is not always a docking station available and wastes valuable time.

How configure TESTKING-WS270 so that she does not have to enter a hardware profile as well as to start automatically?

- A. You should modify the hardware profiles on TESTKING-WS270 and position the Docked hardware profile at the top of the list of hardware profiles.
- B. You should create a new hardware profile named Docked for the default hardware profile.

- C. You should have TESTKING-WS270 restarted in the undocked profile.
- D. You should delete the Docked hardware profile.

Answer: D

Explanation:

The docked profile option is not necessary as she is not using a docking station.

Reference:

Rick Wallace, MCSE (Exam 70-270) Microsoft XP Professional Training Kit, Microsoft Press, Redmond, 2002, Chapter 10, Lesson 3 & Chapter 15, Lesson 6

Question 10:

You are the senior network administrator for TestKing.com. The company's network consists of a single Active Directory domain named testking.com. All the servers run Windows Server 2000 and the client computers Windows XP Professional.

A user named Amy Wilson is assigned a client computer named TESTKING-WS63. You receive a complaint from Amy Wilson that TESTKING-WS63 is not functioning as it should. While troubleshooting the computer, you find out that the hard disk on TESTKING-WS63 doesn't work properly.

You replace the hard disk and install Windows XP Professional with all the default settings using the OEM version. You discover that you are unable to access files on TESTKING-WS63 and receive an error message stating "Error 5: Access is denied".

Identify your first step you should perform to ensure that she can access network resources successfully?

- A. She should run the Dynamic Update Wizard.
- B. She should make changes to the Boot.ini file.
- C. She should determine whether the components are compatible.
- D. She should run a complete installation of Windows XP Professional on TESTKING-WS63.
- E. She should run the Accessibility Wizard.

Answer: D

Explanation:

In order to be able to access resources in the domain and on the server in particular, TESTKING-WS63 must be added to the domain.

Reference:

Rick Wallace, MCSE (Exam 70-270) Microsoft XP Professional Training Kit, Microsoft Press, Redmond, 2002, Chapter 8, Lesson 2

Microsoft Knowledge Base Article - Q279765, HOW TO: Use the Fast User Switching Feature in Windows XP

Question 11:

Sean works in the IT unit, where all of the Windows XP Professional computers have been configured in a workgroup called IT. You want him to be able to create users and groups on the Windows XP Professional computers within the workgroup but not to manage properties of users and groups that he did not create. To which of the following groups should you add Sean on each Windows XP Professional computer he will manage?

- A. Administrators

- B. Power Users
- C. Server Operators
- D. Power Operators

Answer: B

Question 12:

You install Windows XP Professional on your home computer. When the installation concludes, you see only the Recycle Bin icon on the desktop. You do not see the My Computer, My Network Places or My Documents icons on the desktop. You want these icons to appear on the desktop.

Which of the following actions should you perform?

- A. Enable Use Windows classic folders in Folder Options.
- B. Manually enable the appropriate desktop icons in Control Panel.
- C. Configure folders to use the simple folder view.
- D. Right-click the desktop, and select Show Desktop Icons.

Answer: B

Question 13:

You work as a desktop administrator at TestKing.com. The servers on the network run are configured to run Windows Server 2000 and the client computers Windows XP Professional.

Testking.com users in the Marketing department sometimes connect to the TestKing.com network from remote locations using dial-up connections. You receive numerous complaints from marketing personnel informing you that as soon as they dial in to the remote access server they are unable to establish connection.

How can you solve the problem?

- A. The default connection speed of the modem should be reduced.
- B. You should restart the server to the Last Known Good Configuration.
- C. The default connection speed of the modem should be increased.
- D. You should replace the modem with a newly acquired one.
- E. You should use Internet Connection Sharing to create a dial-up connection.

Answer: A

Explanation:

Since users travel to remote areas it is highly likely that the current connection speed of the modems on their computers are set to the more modern technology telephone lines and thus cannot handle the outdated technology. However, they must make use of the technology where they find themselves. To enable them to establish contact you should thus adjust the default connection speed to a lower rate.

Reference:

Rick Wallace, MCSE (Exam 70-270) Microsoft XP Professional Training Kit, Microsoft Press, Redmond, 2002, Chapter 17, Lessons 1 & 2

Question 14:

Your corporate network includes two remote access servers, one running Windows NT Server 4.0 and another running Windows 2000 Server. Each server has four modems. A single telephone line distributes incoming calls to the server modems.

Sonya is an executive. She travels frequently. Her laptop computer is equipped with a smart

TestKing Microsoft 70-270 Exam Questions & Answers

card reader and runs Windows XP Professional. You want to configure Sonya's computer to establish a remote access connection with the corporate network using her smart card. Corporate security policy requires that the strongest encryption be used for authentication and data transmission. In addition, the sessions must be disconnected if the server does not support these requirements. You must configure the Security options for Sonya's computer. What should you do? (Choose three. Each correct answer represents part of the solution.) Select Advanced (custom settings).

- A. Select Advanced (custom settings).
- B. Select Typical (recommended settings).
- C. Select Require data encryption (disconnect if none).
- D. In Advanced settings, disable all protocols but MS-CHAP v2.
- E. For the Validate my identity as follows option, select Use smart card.
- F. In Advanced settings, select Use Extensible Authentication Protocol (EAP).
- G. For the Validate my identity as follows option, select Require secured password.
- H. Select Automatically use my Windows logon name and password (and domain if any).
- I. In Advanced Security Settings, select Require encryption (disconnect if server declines).
- J. In Advanced Security Settings, select Maximum strength encryption (disconnect if server declines).

Answer: A,F,J

Question 15:

You work as a Network Administrator of a Windows 2000 domain-based network. Kate, a Web Developer, publishes a Web application on her Windows XP Professional computer by using IIS. She creates a folder named ACCOUNTS in C:\inetpub\wwwroot folder. Three Web pages named ACCOUNTS.HTM, ACCOUNTSREP.HTM, and SALESREP.HTM are kept in this folder. Kate wants these pages to be accessed only by the accounts employees having a valid user name and password. The directory security structure is as follows:



You are required to ensure that only valid users are able to access these files. However, you are also required to enable the non-authenticated users to access the other pages of the

TestKing [Microsoft 70-270](#) Exam Questions & Answers

Web site.

How will you accomplish this?

- A. Select the Basic authentication check box in the Web site properties.
- B. Modify the security permissions on the ACCOUNTS folder to list the users authorized to access the files.
- C. Clear the Anonymous access check box in the Web site properties.
- D. Modify the security permissions on the three files in the ACCOUNTS folder to list the users authorized to access the files.

Answer: B

Related 70-270 Exams:

70-228	70-227	70-226	70-225	70-224
70-223	70-222	70-221	70-285	70-220
70-284	70-282	70-281	70-445	70-441
70-639	70-089	70-631	70-086	70-630
70-219	70-218	70-217	70-216	70-215
70-214	70-244	70-210	70-400	70-431
70-624	70-301	70-620	70-557	70-236
70-235	70-299	70-234	70-298	70-297
70-232	70-296	70-294	70-262	70-230
70-293	70-292	70-291	70-290	74-676

Popular Certification Exams:

HP2-H05	HP2-Q04	920-448	000-114	9E0-576
000-638	HP0-D04	HP0-417	642-067	000-M35
000-735	HP2-Z12	156-110	4A0-107	SQ0-101

Hot Certifications:

RCP	MCTS: Windows SharePoint Services 3.0 â€™ Configuration	RoboHelp Certified	CWNA	MCITP: Enterprise Messaging Administrator 2010
---------------------	---	--	----------------------	--

Popular Certification Providers:

Juniper	USMLE	RSA	RedHat	AWP
-------------------------	-----------------------	---------------------	------------------------	---------------------