



642-357

Designing Cisco Storage Network Solutions (CSNDS)

Exam number/code: 642-357

Exam name: Designing Cisco Storage Network Solutions (CSNDS)

Questions & Answers: 209 Q&A

Related Certifications: [Specialist](#), [Storage Networking](#)



Hundreds of people each day pass their IT certification exams with Testking guaranteed certification resources and training kits.

Use the [Cisco 642-357](#) questions and answers to practice for your next Cisco certification exam. If you don't pass – you don't pay! Testking has the first and only 100% product satisfaction and exam passing guarantee. Advanced practice questions and answers help drive the information into your routine thinking and surpass 642-357 brain dumps in retention and skill building.

[Cisco](#) 642-357 exam answers and practice questions can be used at home or office, installable on up to two PCs, or print the questions and answers to take with you and train on-the-go! Cisco 642-357 preparation tools are the perfect fit for any Cisco certification candidate with [642-357](#) training materials for every level of entry.

Exam Engine Features

Control your IT training process by customizing your practice certification questions and answers. The fastest and best way to train.

- * Truly interactive practice tests
- * Create and take notes on any question
- * Retake tests until you're satisfied
- * YOU select the areas of the exam to cover
- * Filter questions for a new practice test experience each time
- * Re-visit difficult questions

Exam: 642-357 Certification Questions & Answers

Question 1:

Which option should be used to ensure the lowest possible downtime during the migration process? Select the best response.

- A. NPIV
- B. SDV
- C. FlexAttach
- D. SAN Extension

Answer: B

Question 2:

What technology minimizes the potential for service interruption on SAN extension links?

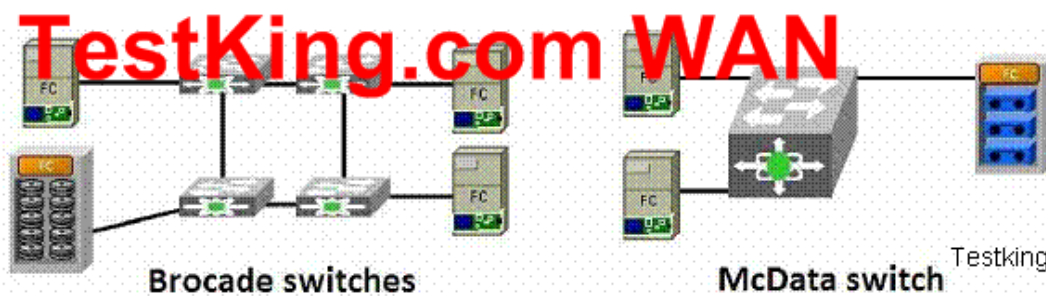
- A. VSANs andIVR
- B. PortChanneling
- C. FCIP
- D. VRRP

Answer: B

Question 3:

Refer to the exhibit.

Exhibit:



A customer has two sites with separate SAN setups and Brocade switches. The customer is considering using the sites for disaster recovery purposes and needs to connect them. The sites are about 150 km apart. The bandwidth required is estimated to be less than 800 Mb/s. What is the most cost-effective solution? Select the best response.

- A. Add Cisco MDS 9222i switches and use FCIP connectivity between the two sites.
- B. Connect the Brocade switches directly with Fibre Channel links and set the maximum amount ofBB_Credits.
- C. Use DWDM connectivity, available from the localtelco provider.
- D. Add Cisco MDS 9124 switches and connect them directly with optical links by taking advantage of their extended amount ofBB_Credits.

Answer: A

Question 4:

How are Cisco MDS 9000 distributed devices aliases synchronized between all switches in the fabric?

- A. As part of fabric merge events
- B. Using the Cisco Fabric Service (CFS) feature
- C. Using the Fabric Manager Import/Export Alias feature
- D. Using Fabric Manager Server Only

Answer: B

Question 5:

What are three reasons to implement VSANs in a Fibre Channel SAN? (Choose three.)

- A. to increase data security
- B. to share SAN extension capability using EISLs
- C. to reduce network infrastructure requirements
- D. to enable port-channeling

Answer: A,B,C

Question 6:

TestKing.com has 40 servers attached to the edge switch in a core-edge design. Each server's average throughput is between 22 and 35 MB. How many 4 GB ISLs should be provisioned between the edge and the core and what will the ISL oversubscription ratio be?

- A. 8,5:1
- B. 4,20:1
- C. 8,10:1
- D. 4,10:1

Answer: D

Question 7:

How are Cisco MDS 9000 distributed device aliases synchronized between all switches in the fabric?

- A. using the Fabric Manager Import/Export Alias feature
- B. as part of fabric merge events
- C. using the Cisco Fabric Services (CFS) feature
- D. using Fabric Manager Server only

Answer: C

Question 8:

What is the definition of fan-in ratio as it applies to SANs?

- A. The ratio of storage ports to a single host port
- B. The amount of aggregation port bandwidth in the path from storage port to host port
- C. The amount of aggregate bandwidth of ISLs in the path from host port to storage port
- D. The ratio of host ports that need to access a single storage port

Answer: D

Question 9:

Which statement is true about LUN zoning in a heterogeneous environment?

- A. Hardware-enforced LUN zoning helps to ensure that LUNs are accessible by all hosts.
- B. LUN zoning requires no special configuration on storage arrays.
- C. LUN masking should be used in all situations.
- D. use LUN zoning instead of LUN masking to centralize management in mixed storage environments.

Answer: D

Question 10:

Your customer uses a custom change management application. The customer wants running configuration files from Cisco MDS 9000 switches to be saved automatically to an FTP server every night. How can this be accomplished?

- A. The customer can use the CLI Command Scheduler to set up automated jobs.
- B. The customer must purchase Fabric Manager Server to set up automated jobs.
- C. The customer must purchase the Enterprise license to enable Batch Job Automation.
- D. The customer can use the CFS feature to distribute a command job to each switch in the fabric.

Answer: A

Question 11:

Your customer has a number of data storage requirements:

* servers are not responsible for volume management or data migration storage is provisioned in real time legacy and heterogeneous storage assets can be consolidated and fully utilized data can be protected using simplified snapshot and replication techniques data can be assigned to different classes easily

Which solution would meet these requirements?

- A. Wide Area Application Services (WAAS)
- B. host-based virtualization
- C. fabric-based virtualization
- D. LUN zoning
- E. VSANs

Answer: C

Question 12:

Your SAN environment requires redundant fabrics with redundant connectivity for 40 database hosts at 2 Gbps of throughput per host. Which two of these configurations are possible? (Choose two.)

- A. six 16-port line cards
- B. two 32-port line cards and two 16-port line cards
- C. four 48-port line cards

- D. two 48-port line cards
- E. four 32-port line cards

Answer: A,C

Question 13:

Which three Fibre Channel switch features are unique to Cisco's MDS 9000 Series Switches? (Choose three.)

- A. FC Link Aggregation
- B. Read-only Zones
- C. LUN Zoning
- D. Internet-Switch link
- E. Fibre Channel Congestion Control
- F. FSPF

Answer: B,C,E

Question 14:

Refer to the exhibit.

Exhibit:



A customer has 6 OLTP database servers, 6 data-mining database servers, 6 video streaming servers, 6 mail servers, and 12 file servers. All servers have dual 8-Gbps host bus adapters for redundancy and all will connect to the same pair of Cisco MDS 9513 directors. What would be the most cost-effective way of connecting the servers to the directors, while still maintaining their bandwidth requirements? The assumption is that the OLTP and mail servers will utilize 50% of the bandwidth, data-mining and video streaming servers will utilize

TestKing [Cisco 642-357](#) Exam Questions & Answers

100% of the bandwidth, and file servers will utilize 25% of the bandwidth. Choose the best combination of line cards. Select the best response.

- A. 1 x 24-port 8-Gb/s FC switching module, 1 x 4/44-port 8-Gb/s FC switching module
- B. 2 x 24-port 8-Gb/s FC switching module
- C. 1 x 24-port 8-Gb/s FC switching module, 1 x 48-port 8-Gb/s FC switching module
- D. 1 x 48-port 8-Gb/s FC switching module

Answer: C

Question 15:

What affect does VSAN technology have on typical capacity planning for a storage network?

- A. When capacity planning where VSANs will be implemented, each VSAN must be capacity planned independently of all other VSANs
- B. Unused ports can easily be redeployed for other applications in other VSANs
- C. VSANs are over provisioned separately to provide for capacity growth
- D. Because of the complete isolation of VSANs, more ports are required in a VSAN environment than in a non-VSAN environment

Answer: B

Related 642-357 Exams:

642-436	650-568	642-432	642-591	646-058
646-057	642-983	646-056	642-982	642-523
642-522	642-587	642-681	642-425	642-583
642-582	642-975	642-974	642-973	642-481
642-321	642-384	642-383	642-382	642-381
642-617	642-185	650-251	642-515	642-181
642-577	646-393	650-059	646-392	642-414
646-230	642-964	642-311	642-961	642-801
642-374	642-373	642-372	642-371	642-274
642-272	642-176	646-229	642-567	642-566
642-565	646-222	642-071	646-574	646-573
642-105	642-104	642-262	650-393	642-165
642-164	650-297	642-655	650-296	642-654
642-162	642-652	642-067	642-651	642-066
642-062	646-276	650-195	642-061	642-552
642-551	642-359	642-356	642-355	642-354
646-171	642-353	646-011	642-352	642-351
646-562	650-322	646-561	642-642	642-055
642-545	642-054	642-544	642-053	650-027
642-446	642-445	642-444	646-102	650-180
650-575	642-342	642-243	642-145	642-143
642-631	650-178	650-175	642-532	

Popular Certification Exams:

[000-993](#)

[E20-597](#)

[HP0-J17](#)

[BI0-122](#)

[E20-350](#)

[920-470](#)

[LOT-835](#)

[1Y0-610](#)

[000-922](#)

[JN0-350](#)

[000-706](#)

[650-621](#)

[PW0-104](#)

[JN0-130](#)

[9E0-421](#)

Hot Certifications:

[NCTS](#)

[CPCS](#)

[Advisor](#)

[Certified
Operator](#)

[Certified
Developer](#)

Popular Certification Providers:

[BICSI](#)

[Dassault
Systemes](#)

[LSAT](#)

[Novell](#)

[Dell](#)