



642-062

***Routing and Switching Solutions for System Engineers
(RSSSE)***

Exam number/code: 642-062

Exam name: Routing and Switching Solutions for System Engineers
(RSSSE)

Questions & Answers: 128 Q&A

Related Certifications: [Specialist](#)



Hundreds of people each day pass their IT certification exams with Testking guaranteed certification resources and training kits.

Use the [Cisco 642-062](#) questions and answers to practice for your next Cisco certification exam. If you don't pass – you don't pay! Testking has the first and only 100% product satisfaction and exam passing guarantee. Advanced practice questions and answers help drive the information into your routine thinking and surpass 642-062 brain dumps in retention and skill building.

[Cisco](#) 642-062 exam answers and practice questions can be used at home or office, installable on up to two PCs, or print the questions and answers to take with you and train on-the-go! Cisco 642-062 preparation tools are the perfect fit for any Cisco certification candidate with [642-062](#) training materials for every level of entry.

Exam Engine Features

Control your IT training process by customizing your practice certification questions and answers. The fastest and best way to train.

- * Truly interactive practice tests
- * Create and take notes on any question
- * Retake tests until you're satisfied
- * YOU select the areas of the exam to cover
- * Filter questions for a new practice test experience each time
- * Re-visit difficult questions

Exam: 642-062 Certification Questions & Answers

Question 1:

What are three characteristics of the Cisco Validated Designs (CVDs) architectural selling approach? (Choose three.)

Select 3 response(s).

- A. This selling approach does not support verticalization.
- B. Integrated solutions are aligned to customer buying patterns.
- C. The PINs have been pushed out to partners and have been well-received.
- D. This selling approach is based on customer requirements.

Answer: B,C,D

Question 2:

You work as a network technician at TestKing.com. You study the exhibit carefully. Which PIN architecture is represented?

Select the best response.

Exhibit:



- A. Data Center
- B. Teleworker
- C. Branch
- D. Campus

Answer: C

Question 3:

In the Cisco Catalyst 6500-E Series chassis, what are three key chassis specifications? (Choose three.)

- A. is backward-compatible with all existing software versions
- B. supports all existing supervisors, line cards, switch fabrics, and software releases
- C. requires Cisco IOS 12.2(1)SXD and beyond
- D. three-slot chassis supports CEF720 line cards
- E. six- and nine-slot chassis support only 6000-W power supplies

Answer: A,B,D

Question 4:

Given a Cisco Catalyst 4500 Series Switch with redundant supervisors, what feature allows phone calls to remain up in the event of a supervisor failure? Select the best response.

- A. NetFlow
- B. NSF
- C. SSO
- D. CEF
- E. HSRP

Answer: C

Question 5:

You work as a network technician at TestKing.com. You study the exhibit carefully. The network is running the EIGRP routing protocol. Distribution router 1 loses the link to the corporate network. How should the remote spoke router be configured to prevent it from being the next lowest-cost path to network 10.3.1.0? Select the best response.

Exhibit:



- A. Configure it as an EIGRP stub router.
- B. Disable split horizon.
- C. Configure a floating static route to network 10.3.1.0.
- D. Enable route filtering.

Answer: A

Question 6:

In the Cisco Catalyst 6500-E Series chassis, what are three key chassis specifications? (Choose three.)
Select 3 response(s).

- A. is backward-compatible with all existing software versions
- B. supports all existing supervisors, line cards, switch fabrics, and software releases

- C. six- and nine-slot chassis support only 6000-W power supplies
- D. requires Cisco IOS 12.2(1)SXD and beyond
- E. three-slot chassis supports CEF720 line cards

Answer: A,B,E

Question 7:

What three network applications are enabled via Cisco NetFlow? (Choose three.)

- A. topology mapping
- B. security analysis
- C. user profiling
- D. application profiling
- E. quality of service
- F. network modeling

Answer: B,C,D

Question 8:

You have a client that currently has a single connection to an ISP. Your client is growing rapidly and would like to provide more capacity to the Internet without losing the ability to support high availability. Which methodology will support dual-homed connections to the same ISP and also support high availability?

- A. VRRP
- B. GLBP
- C. HSRP
- D. RPR+

Answer: B

Question 9:

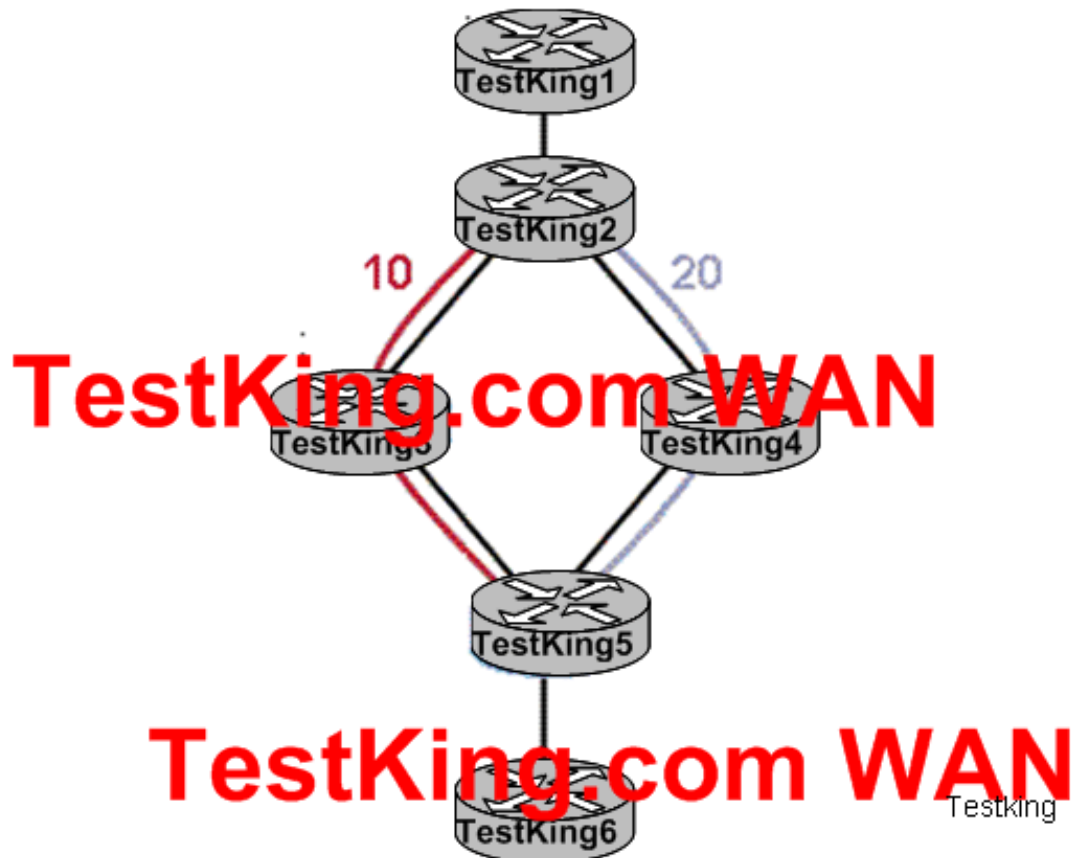
When issuing the Cisco IOS command show power in the Cisco Catalyst 6509 Switch, which four types of information can be gathered? (Choose four.)

- A. IOS revision level
- B. power capacity in watts and amperage by chassis and line card
- C. line card revision
- D. operational state
- E. power supply fan status
- F. line card administrative state and slot location

Answer: B,D,E,F

Question 10:

Exhibit:



You work as a network administrator at TestKing.com. You study the exhibit carefully. The customer needs to implement the network topology shown. The path TestKing2- TestKing3- TestKing5 has a cost of 10, and the path TestKing2- TestKing4- TestKing5 has a cost of 20. After analyzing the exhibit, do you believe that load sharing can occur over these two paths?

- A. only by using OSPF, because the SPF calculation will flood all the domain information to all OSPF areas
- B. only if using EIGRP and as long as the TestKing2- TestKing4-TestKing5 link is proven to be loop free, load sharing is possible in proportion to the link costs.
- C. only if using MPLS, and router F and router A are eBGP neighbors
- D. yes, if using IS-IS and you have tuned the timers for the SPF calculation
- E. yes, if using RIP and the command parameter max-paths 2 has been configured

Answer: B

Question 11:

In which service component of the optimize phase would you assess the routing and switching system and recommend activities such as optimizing device configurations, capacity planning, or traffic analysis? Select the best response.

- A. Security Administration
- B. Change Management
- C. Operations Readiness Assessment
- D. Technology Assessment
- E. Security Assessment
- F. Operations Assessment

Answer: D

Question 12:

A client organization is investigating deploying IP communications. It has a traditional hub-and-spoke Frame Relay WAN. It has five remote sites, and the WAN link speed for each location is 512 kbps. The WAN supports typical IP-based applications, but the client will also be rolling out a new ERP application that will be considered mission critical. Which three QoS mechanisms will be useful in redesigning the WAN to support the mission-critical application and IP communications? (Choose three.)
Select 3 response(s).

- A. WFQ
- B. LLQ
- C. cRTP
- D. CBWFQ
- E. LFI
- F. 5 to 11 class model

Answer: B,C,E

Question 13:

You have a customer who would like to upgrade their branch to Metro Ethernet. Which profile can be used as a migration profile to show the customer how to upgrade their branch? Select the best response.

- A. multitier branch profile
- B. single-tier branch profile
- C. double-tier branch profile
- D. triple-tier branch profile

Answer: C

Question 14:

Which Cisco Catalyst 6500 Series Switch supervisor module should you select in order to allow service providers to deploy MPLS and achieve high throughput?

- A. Supervisor 2
- B. Supervisor 720
- C. Supervisor 1A
- D. Supervisor 32

Answer: B

Question 15:

Which two of these are features of the Cisco 2851 Integrated Services Router, but not features of Cisco 1800 Series Integrated Services Routers? (Choose two.) Select 2 response(s).

- A. two integrated 10/100/1000 Ethernet ports
- B. slots dedicated to Cisco High-Density Analog and Digital Extension Module for Voice and Fax
- C. 32-Gbps switching bus
- D. Power over Ethernet support for 10/100 Ethernet ports
- E. built-in wireless module
- F. Cisco SDM for simplified management

Answer: A,B

Related 642-062 Exams:

642-436	650-568	642-432	642-591	646-058
646-057	642-983	646-056	642-982	642-523
642-522	642-587	642-681	642-425	642-583
642-582	642-975	642-974	642-973	642-481
642-321	642-384	642-383	642-382	642-381
642-617	642-185	650-251	642-515	642-181
642-577	646-393	650-059	646-392	642-414
646-230	642-964	642-311	642-961	642-801
642-374	642-373	642-372	642-371	642-274
642-272	642-176	646-229	642-567	642-566
642-565	646-222	642-071	646-574	646-573
642-105	642-104	642-262	650-393	642-165
642-164	650-297	642-655	650-296	642-654
642-162	642-652	642-067	642-651	642-066
646-276	650-195	642-061	642-552	642-551
642-359	642-357	642-356	642-355	642-354
646-171	642-353	646-011	646-562	650-322
646-561	642-642	642-055	642-545	642-054
642-544	642-053	650-027	642-446	642-445
642-444	646-102	650-180	650-575	642-342
642-243	642-145	642-143	642-631	650-178

Popular Certification Exams:

JN0-310	50-632	RDCR08301	COG-400	646-223
PW0-204	000-885	9A0-034	000-926	BR0-002
000-872	000-021	000-445	HP0-436	HP0-M18

Hot Certifications:

NCTS	CSSLP	CCDP	On Demand Business	IP Communications
----------------------	-----------------------	----------------------	------------------------------------	-----------------------------------

Popular Certification Providers:

ATS	ETA	PRINCE2	McAfee	Business Objects
---------------------	---------------------	-------------------------	------------------------	----------------------------------